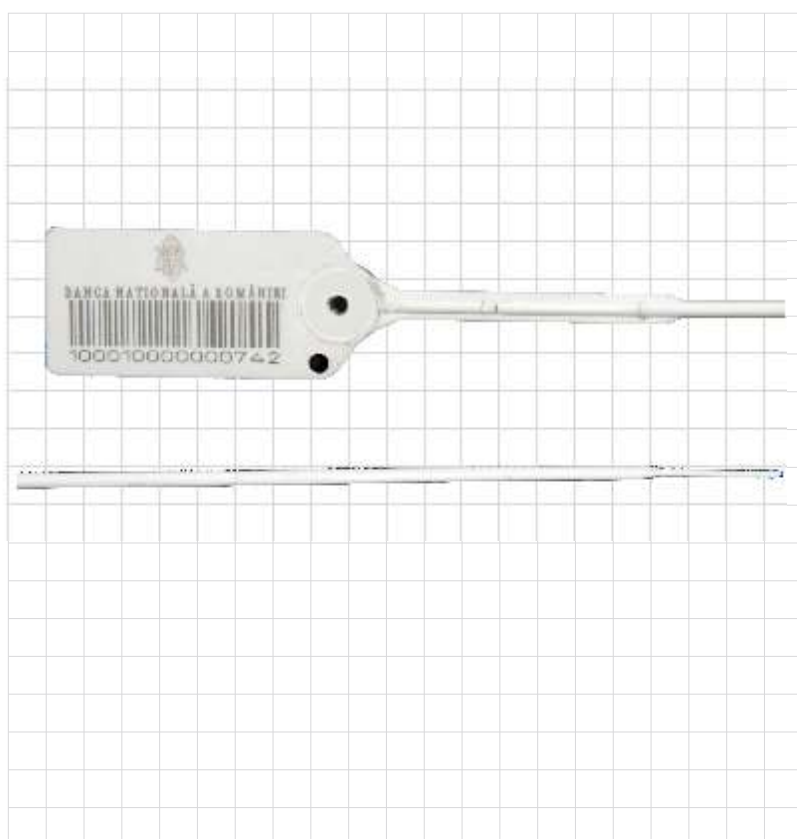




BANK SEAL



Aplicatii

- Camioane • Cisterne • Curierat
- Transporturi de valori si aeriene

Material

- Polietilena HD
- Sistem de inchidere metalic

Specificatii

- ISO/PAS 17712 - sigiliu indicativ
- UK Custom - grupa 3 echivalent
- Lungime operationala: 500 mm
- Autoblocant

Marcare

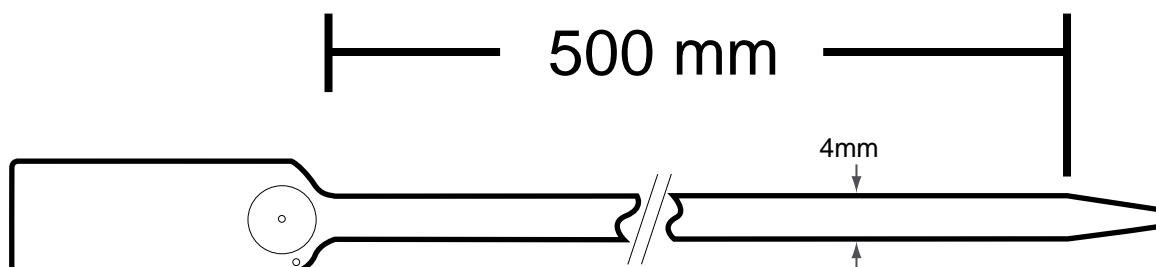
- Marcare laser
- Text • Serie
- Logo • Cod de bare

Culori

- Alb

Ambalare

- 1000 bucati / cutie
- Dimensiuni: 390x500x220 mm
- Greutate: 3.5 kg



- toate masuratorile au fost efectuate in milimetri