

BANK SEAL



APLICAȚII

- Cisterne
- Camioane
- Transport aerian si valori
- Posta si curierat
- Vagoane

MATERIAL

- Polipropilena
- Sistem de inchidere metalic

CARACTERISTICI

- Sigiliu de plastic cu sistem de inchidere metalic
- Autoblocant
- Inchidere reglabila (tip lat)
- Zona de marcare mare

MARCAJE

Marcare Laser:

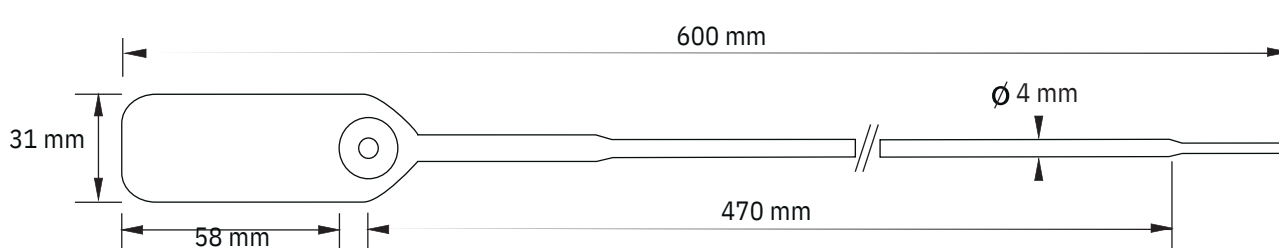
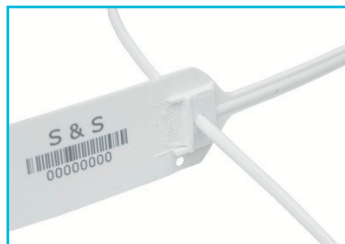
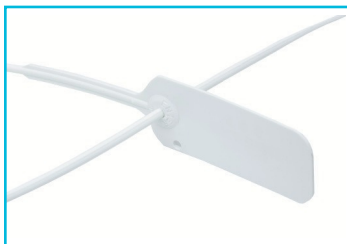
- Logo • Text • Serie • Cod de bare

CULORI

- Alb

AMBALARE

- 1000 bucati/cutie
- Dimensiuni: 680 x 185 x 385 mm
- Greutate: 8 kg



BANK SEAL



APPLICATIONS

- Tankers
- Trucks
- Air transport and valuables
- Post and courier
- Wagons

MATERIAL

- Polypropylene
- Metal locking system

CHARACTERISTICS

- Plastic seal with metal locking system
- Self-locking
- Adjustable locking (wide type)
- Large marking area

MARKINGS

Laser Marking:

- Logo • Text • Series • Barcode

COLORS

- White

PACKAGING

- 1000 pieces/box
- Dimensions: 680 x 185 x 385 mm
- Weight: 8 kg

